

March 2017

# Protecting skin. It's in our nature.

## STOMA CARE PRODUCTS

A complete guide to our range of colostomy,  
ileostomy and urostomy products,  
including our range featuring Aloe Vera extracts



**SALTS**  
HEALTHCARE  
Excellence in stoma care

## AUSTRALIAN PRODUCT ALLOWANCES PER PATIENT PER MONTH/YEAR

Confidence® Natural Advance Closed	90 pouches per month (3 boxes)
Confidence® Natural Closed	90 pouches per month (3 boxes)
Confidence® Natural Soft Convex Closed	60 pouches per month (6 boxes)
Confidence® Convex Supersoft Closed	60 pouches per month (6 boxes)
Harmony® Duo Closed	90 pouches per month (3 boxes)
Harmony® Duo Closed Flanges	30 flanges per month (3 boxes)
Harmony® Duo Convex Closed Flanges	20 flanges per month (4 boxes)
Confidence® Natural Advance Drainable	30 pouches per month (1 box)
Confidence® Natural Drainable	30 pouches per month (1 box)
Confidence® Natural Soft Convex Drainable	30 pouches per month (3 boxes)
Confidence® Comfort Drainable	30 pouches per month (1 box)
Confidence® Comfort Paediatric/Neonatal	60 pouches per month (2 boxes)
Confidence® Convex Supersoft Drainable	30 pouches per month (3 boxes)
Harmony® Duo Drainable	30 pouches per month (1 box)
Harmony® Duo Drainable Flanges	30 flanges per month (3 boxes)
Harmony® Duo Convex Drainable Flanges	20 flanges per month (4 boxes)
Confidence® Natural Advance Urostomy	40 pouches per month (4 boxes)
Confidence® Natural Urostomy	40 pouches per month (4 boxes)
Confidence® Gold Oval Urostomy	40 pouches per month (4 boxes)
Confidence® Convex Supersoft Urostomy	30 pouches per month (3 boxes)
Confidence Wound and Fistula Pouch (non-sterile)	10 pouches per month (1 box)
Simplicity® Stoma Support Wear	6 pairs per year
Dermacol®	30 collars per month (1 box)
SecuPlast® Mouldable Seals, Standard & Thin	30 seals per month (1 box)
SecuPlast® Mouldable Seals, Large	30 seals per month (3 boxes)
SecuPlast® Aloe Rings	30 rings per month (1 box)
SecuPlast® Hydro Aloe Vera	60 strips per month (2 packs)
SecuPaste®	3 tubes per month
SecuPlast® Hydro Tape	4 boxes per month
WipeAway Wipes	60 sachets per month (2 boxes)
WipeAway PLUS Spray	2 sprays per month
Peri-Prep® Sensitive Wipes	60 sachets per month (2 boxes)
No-Roma	1 bottle per month
Stoma Paste	3 tubes per month
Night Drainage Bag	5 bags per month
Adjustable Ostomy Belt	4 belts per year

## Contents

● Confidence® Natural Advance Closed . . . . .	4
● Confidence® Natural Closed. . . . .	6
● Confidence® Natural Soft Convex Closed . . . . .	8
● Confidence® Convex Supersoft Closed . . . . .	10
● Harmony® Duo Closed . . . . .	12
● Harmony® Duo Closed Flanges . . . . .	14
● Harmony® Duo Convex Closed Flanges . . . . .	15
● Confidence® Natural Advance Drainable . . . . .	16
● Confidence® Natural Drainable . . . . .	18
● Confidence® Natural Soft Convex Drainable . . . . .	20
● Confidence® Comfort Drainable. . . . .	22
● Confidence® Comfort Paediatric/Neonatal. . . . .	23
● Confidence® Convex Supersoft Drainable . . . . .	24
● Harmony® Duo Drainable . . . . .	26
● Harmony® Duo Drainable Flanges . . . . .	28
● Harmony® Duo Convex Drainable Flanges. . . . .	29
● Confidence® Natural Advance Urostomy . . . . .	30
● Confidence® Natural Urostomy. . . . .	32
● Confidence® Gold Oval Urostomy . . . . .	34
● Confidence® Convex Supersoft Urostomy . . . . .	36
● Confidence® Wound and Fistula Pouch with Flexifit® (non-sterile) . . . . .	38
● Simplicity® Stoma Support Wear . . . . .	40
● Dermacol®. . . . .	42
● SecuPlast® Mouldable Seals . . . . .	43
● SecuPlast® Aloe Rings. . . . .	44
● SecuPlast® Hydro Aloe Vera . . . . .	45
● SecuPaste® . . . . .	46
● SecuPlast® Hydro Tape . . . . .	46
● WipeAway Wipes . . . . .	47
● WipeAway PLUS Spray . . . . .	47
● Peri-Prep® Sensitive Wipes . . . . .	47
● No-Roma . . . . .	47
● Stoma Paste . . . . .	47
● Night Drainage Bag . . . . .	47
● Adjustable Ostomy Belts . . . . .	47

# Confidence<sup>®</sup>

Natural Advance



WITH ALOE EXTRACTS

For more information and free samples: **AUS 1300 784 737 • NZ 0800 100 146**





**CLOSED**

**1-PIECE  
CLOSED**

### LARGE CLOSED POUCHES

SIZE	VOLUME	STARTER HOLE	PRE-CUT	ORDER CODES		PACK SIZE
				Transparent	Trans/Overlap	
13–90mm	450ml	•	–	NALT1390**	NAL1390**	30
13mm	450ml	•	–	NALT13*	NAL13*	30

### STANDARD CLOSED POUCHES

SIZE	VOLUME	STARTER HOLE	PRE-CUT	ORDER CODES		PACK SIZE
				Transparent	Trans/Overlap	
13mm	300ml	•	–	NAT13*	NA13*	30
25mm	300ml	–	•	–	NA25	30
28mm	300ml	–	•	–	NA28	30
32mm	300ml	–	•	–	NA32	30
35mm	300ml	–	•	–	NA35	30
38mm	300ml	–	•	–	NA38	30
41mm	300ml	–	•	–	NA41	30

### MINI CLOSED POUCH

SIZE	VOLUME	STARTER HOLE	PRE-CUT	ORDER CODE	PACK SIZE
				Trans/Overlap	
13mm	150ml	•	–	NAM13*	30

\* Starter hole wafers can be cut up to 70mm wide and 55mm deep.

\*\*Large wafers can be cut up to 90mm wide and 80mm deep.

**SAS MONTHLY ALLOWANCE: 90 pouches per month (3 boxes)**

# Confidence®

## Natural

WITH ALOE VERA



WITH ALOE EXTRACTS

For more information and free samples: **AUS 1300 784 737 • NZ 0800 100 146**



**CLOSED**

### LARGE CLOSED POUCHES

SIZE	VOLUME	STARTER HOLE	PRE-CUT	ORDER CODES		PACK SIZE
				Transparent	Trans/Overlap	
13mm	450ml	•	–	NLT13*	NL13*	30
25mm	450ml	–	•	–	NL25	30
28mm	450ml	–	•	–	NL28	30
32mm	450ml	–	•	–	NL32	30
35mm	450ml	–	•	–	NL35	30
38mm	450ml	–	•	–	NL38	30
41mm	450ml	–	•	–	NL41	30

### STANDARD CLOSED POUCHES

SIZE	VOLUME	STARTER HOLE	PRE-CUT	ORDER CODES		PACK SIZE
				Transparent	Trans/Overlap	
13mm	300ml	•	–	NT13*	N13*	30
25mm	300ml	–	•	–	N25	30
28mm	300ml	–	•	–	N28	30
32mm	300ml	–	•	–	N32	30
35mm	300ml	–	•	–	N35	30
38mm	300ml	–	•	–	N38	30
41mm	300ml	–	•	–	N41	30

### MINI CLOSED POUCHES

SIZE	VOLUME	STARTER HOLE	PRE-CUT	ORDER CODES		PACK SIZE
				Transparent	Trans/Overlap	
13mm	150ml	•	–	–	NM13*	30
25mm	150ml	–	•	–	NM25	30
28mm	150ml	–	•	–	NM28	30
32mm	150ml	–	•	–	NM32	30
35mm	150ml	–	•	–	NM35	30

\* Starter hole wafers can be cut up to 70mm wide and 55mm deep.

**SAS MONTHLY ALLOWANCE: 90 pouches per month (3 boxes)**

# Confidence®

Natural Soft Convex



WITH ALOE EXTRACTS

For more information and free samples: **AUS 1300 784 737 • NZ 0800 100 146**





**CLOSED**

### LARGE CLOSED POUCHES

SIZE	VOLUME	STARTER HOLE	PRE-CUT	ORDER CODES Trans/Overlap	PACK SIZE
13–25mm	500ml	•	–	XNL1325	10
13–38mm	500ml	•	–	XNL1338	10
13–52mm	610ml	•	–	XNL1352	10

### STANDARD CLOSED POUCHES

SIZE	VOLUME	STARTER HOLE	PRE-CUT	ORDER CODES Trans/Overlap	PACK SIZE
13–25mm	310ml	•	–	XN1325	10
13–38mm	310ml	•	–	XN1338	10
13–52mm	430ml	•	–	XN1352	10
21mm	310ml	–	•	XN21	10
25mm	310ml	–	•	XN25	10
28mm	310ml	–	•	XN28	10
32mm	310ml	–	•	XN32	10
35mm	310ml	–	•	XN35	10
38mm	310ml	–	•	XN38	10
41mm	310ml	–	•	XN41	10

### MINI CLOSED POUCHES

SIZE	VOLUME	STARTER HOLE	PRE-CUT	ORDER CODES Trans/Overlap	PACK SIZE
13–25mm	150ml	•	–	XNM1325	10
13–38mm	150ml	•	–	XNM1338	10

Note: Convexity should only be used after prior assessment by Stomal Therapy Nurses.

**SAS MONTHLY ALLOWANCE: 60 pouches per month (6 boxes)**

# Confidence®

CONVEX  
SUPERSOFT  
CLOSED



For more information and free samples: **AUS 1300 784 737 • NZ 0800 100 146**



CLOSED

### STANDARD CLOSED POUCHES

SIZE	VOLUME	STARTER HOLE	PRE-CUT	ORDER CODES Trans/Overlap	PACK SIZE
13–25mm	310ml	•	–	CCSS1325	10
13–38mm	310ml	•	–	CCSS1338	10
13–52mm	310ml	•	–	CCSS1352	10
21mm	310ml	–	•	CCSS21	10
25mm	310ml	–	•	CCSS25	10
28mm	310ml	–	•	CCSS28	10
32mm	310ml	–	•	CCSS32	10
35mm	310ml	–	•	CCSS35	10
38mm	310ml	–	•	CCSS38	10
41mm	310ml	–	•	CCSS41	10

Note: Convexity should only be used after prior assessment by Stomal Therapy Nurses.

**SAS MONTHLY ALLOWANCE: 60 pouches per month (6 boxes)**

# Harmony<sup>®</sup> Duo



For more information and free samples: **AUS 1300 784 737 • NZ 0800 100 146**





CLOSED

2-PIECE  
CLOSED

#### LARGE CLOSED POUCHES

SIZE	VOLUME	ORDER CODES Opaque	PACK SIZE
13–32mm	475ml	HDCL1332	30
13–50mm	460ml	HDCL1350	30
13–70mm	475ml	HDCL1370	30

#### STANDARD CLOSED POUCHES

SIZE	VOLUME	ORDER CODES Opaque	PACK SIZE
13–32mm	310ml	HDC1332	30
13–50mm	340ml	HDC1350	30
13–70mm	310ml	HDC1370	30

#### MINI CLOSED POUCHES

SIZE	VOLUME	ORDER CODES Opaque	PACK SIZE
13–32mm	70ml	HDCM1332	30
13–50mm	130ml	HDCM1350	30
13–70mm	200ml	HDCM1370	30

SAS MONTHLY ALLOWANCE: 90 pouches per month (3 boxes)



# Harmony® Duo

with Flexifit® Flange & Aloe Vera

## STANDARD FLANGES – with Flexifit® and Aloe Vera extracts

SIZE	ORDER CODES	TO FIT POUCHES			PACK SIZE
		1332	1350	1370	
13–32mm	FHD1332*	✓	–	–	10
13–50mm	FHD1350*	–	✓	–	10
13–70mm	FHD1370*	–	–	✓	10
21mm	FHD21	✓	–	–	10
25mm	FHD25	✓	–	–	10
28mm	FHD28	✓	–	–	10
32mm	FHD32	✓	–	–	10
35mm	FHD35	–	✓	–	10
38mm	FHD38	–	✓	–	10

## FLEXIBLE FLANGES – with hydrocolloid surround, Flexifit® and Aloe Vera extracts

SIZE	ORDER CODES	TO FIT POUCHES			PACK SIZE
		1332	1350	1370	
13–32mm	FHDF1332*	✓	–	–	10
13–50mm	FHDF1350*	–	✓	–	10
13–70mm	FHDF1370*	–	–	✓	10
21mm	FHDF21	✓	–	–	10
25mm	FHDF25	✓	–	–	10
28mm	FHDF28	✓	–	–	10
32mm	FHDF32	✓	–	–	10
35mm	FHDF35	–	✓	–	10
38mm	FHDF38	–	✓	–	10

\*Starter hole. It doesn't matter if you need a small, standard or large pouch, this matrix still applies.

**SAS MONTHLY ALLOWANCE: 30 flanges per month (3 boxes)**

For more information and free samples: **AUS 1300 784 737 • NZ 0800 100 146**

# Harmony® Duo convex with Flexifit® & Aloe

**2**  
PIECE  
CLOSED



STANDARD FLANGE



FLEXIBLE FLANGE



CONVEX FLANGE

## CONVEX FLANGES – with Flexifit® and Aloe Vera extracts

SIZE	ORDER CODES	TO FIT POUCHES			PACK SIZE
		1332	1350	1370	
13–25mm	XFHD1325*	✓	–	–	5
13–38mm	XFHD1338*	–	✓	–	5
13–52mm	XFHD1352*	–	–	✓	5
21mm	XFHD21	✓	–	–	5
25mm	XFHD25	✓	–	–	5
28mm	XFHD28	✓	–	–	5
32mm	XFHD32	–	✓	–	5
35mm	XFHD35	–	✓	–	5
38mm	XFHD38	–	✓	–	5

\*Starter hole. It doesn't matter if you need a small, standard or large pouch, this matrix still applies.

Note: Convexity should only be used after prior assessment by Stomal Therapy Nurses.

**SAS MONTHLY ALLOWANCE: 20 flanges per month (4 boxes)**

For more information and free samples: **AUS 1300 784 737 • NZ 0800 100 146**

# Confidence<sup>®</sup>

Natural Advance



WITH ALOE EXTRACTS

For more information and free samples: **AUS 1300 784 737 • NZ 0800 100 146**





**DRAINABLE**

1-PIECE  
DRAINABLE

### LARGE DRAINABLE POUCHES

SIZE	VOLUME	STARTER HOLE	PRE-CUT	ORDER CODES		PACK SIZE
				Transparent	Trans/Overlap	
13–90mm	640ml	•	–	NDALT1390**	NDAL1390**	30
13mm	640ml	•	–	NDALT13*	NDAL13*	30

### STANDARD DRAINABLE POUCHES

SIZE	VOLUME	STARTER HOLE	PRE-CUT	ORDER CODES		PACK SIZE
				Transparent	Trans/Overlap	
13mm	540ml	•	–	NDAT13*	NDA13*	30
25mm	540ml	–	•	–	NDA25	30
28mm	540ml	–	•	–	NDA28	30
32mm	540ml	–	•	–	NDA32	30
35mm	540ml	–	•	–	NDA35	30

### SMALL DRAINABLE POUCH

SIZE	VOLUME	STARTER HOLE	PRE-CUT	ORDER CODE	PACK SIZE
				Trans/Overlap	
13mm	395ml	•	–	NDAS13*	30

\* Starter hole wafers can be cut up to 70mm wide and 55mm deep.

\*\*Large wafers can be cut up to 90mm wide and 80mm deep.

**SAS MONTHLY ALLOWANCE: 30 pouches per month (1 box)**

# Confidence®

## Natural

WITH ALOE VERA



WITH ALOE EXTRACTS

For more information and free samples: **AUS 1300 784 737 • NZ 0800 100 146**



**DRAINABLE**

#### LARGE DRAINABLE POUCHES

SIZE	VOLUME	STARTER HOLE	PRE-CUT	ORDER CODES		PACK SIZE
				Transparent	Trans/Overlap	
13mm	640ml	•	–	NDLT13*	NDL13*	30
25mm	640ml	–	•	–	NDL25	30
28mm	640ml	–	•	–	NDL28	30
32mm	640ml	–	•	–	NDL32	30
35mm	640ml	–	•	–	NDL35	30
38mm	640ml	–	•	–	NDL38	30
41mm	640ml	–	•	–	NDL41	30

#### STANDARD DRAINABLE POUCHES

SIZE	VOLUME	STARTER HOLE	PRE-CUT	ORDER CODES		PACK SIZE
				Transparent	Trans/Overlap	
13mm	540ml	•	–	NDT13*	ND13*	30
25mm	540ml	–	•	–	ND25	30
28mm	540ml	–	•	–	ND28	30
32mm	540ml	–	•	–	ND32	30
35mm	540ml	–	•	–	ND35	30
38mm	540ml	–	•	–	ND38	30

#### SMALL DRAINABLE POUCHES

SIZE	VOLUME	STARTER HOLE	PRE-CUT	ORDER CODES		PACK SIZE
				Transparent	Trans/Overlap	
13mm	395ml	•	–	–	NDS13*	30
25mm	395ml	–	•	–	NDS25	30
28mm	395ml	–	•	–	NDS28	30
32mm	395ml	–	•	–	NDS32	30
35mm	395ml	–	•	–	NDS35	30

#### DRAINABLE THEATRE PACK (For hospital purchase only)

SIZE	VOLUME	STARTER HOLE	PRE-CUT	ORDER CODES		PACK SIZE
				Transparent	Trans/Overlap	
13–70mm	540ml	•	–	NDTP**	–	15

\* Starter hole wafers can be cut up to 70mm wide and 55mm deep.

\*\*Not available on the SAS.

**SAS MONTHLY ALLOWANCE: 30 pouches per month (1 box)**

# Confidence®

Natural Soft Convex



WITH ALOE EXTRACTS

For more information and free samples: **AUS 1300 784 737 • NZ 0800 100 146**





**DRAINABLE**

### LARGE DRAINABLE POUCHES

SIZE	VOLUME	STARTER HOLE	PRE-CUT	ORDER CODES Trans/Overlap	PACK SIZE
13–25mm	700ml	•	–	XNDL1325	10
13–38mm	700ml	•	–	XNDL1338	10
13–52mm	660ml	•	–	XNDL1352	10

### STANDARD DRAINABLE POUCHES

SIZE	VOLUME	STARTER HOLE	PRE-CUT	ORDER CODES Trans/Overlap	PACK SIZE
13–25mm	550ml	•	–	XND1325	10
13–38mm	550ml	•	–	XND1338	10
13–52mm	510ml	•	–	XND1352	10
21mm	550ml	–	•	XND21	10
25mm	550ml	–	•	XND25	10
28mm	550ml	–	•	XND28	10
32mm	550ml	–	•	XND32	10
35mm	550ml	–	•	XND35	10
38mm	550ml	–	•	XND38	10
41mm	550ml	–	•	XND41	10

### SMALL DRAINABLE POUCHES

SIZE	VOLUME	STARTER HOLE	PRE-CUT	ORDER CODES Trans/Overlap	PACK SIZE
13–25mm	370ml	•	–	XNDS1325	10
13–38mm	370ml	•	–	XNDS1338	10

Note: Convexity should only be used after prior assessment by Stomal Therapy Nurses.

**SAS MONTHLY ALLOWANCE: 30 pouches per month (3 boxes)**

# Confidence®

**COMFORT &  
COMFORT  
WITH FLEXIFIT®**



## LARGE DRAINABLE POUCH

SIZE	VOLUME	STARTER HOLE	PRE-CUT	ORDER CODE			PACK SIZE
				Transparent	Trans/Overlap	Opaque	
13mm	600ml	•	–	–	DLTO13*	–	30

\* Oval wafer pouches can be cut up to 110mm wide and 70mm deep.

**SAS MONTHLY ALLOWANCE: 30 pouches per month (1 box)**

For more information and free samples: **AUS 1300 784 737 • NZ 0800 100 146**

**1**  
PIECE

**DRAINABLE**



#### PAEDIATRIC DRAINABLE POUCHES

SIZE	VOLUME	ORDER CODES Trans/Overlap	PACK SIZE
8–40mm Starter Hole	135ml	CFP8	30
NO HOLE	135ml	CFPNH	30

#### NEONATAL DRAINABLE POUCHES

SIZE	VOLUME	ORDER CODES Transparent	ORDER CODES Trans/Overlap	PACK SIZE
8–40mm Starter Hole	85ml	CFNT8	CFN8	30
NO HOLE	85ml	CFNTNH	CFNNH	30

**SAS MONTHLY ALLOWANCE: 60 pouches per month (2 boxes)**

For more information and free samples: **AUS 1300 784 737 • NZ 0800 100 146**

# Confidence®

CONVEX  
SUPERSOFT  
DRAINABLE



For more information and free samples: **AUS 1300 784 737 • NZ 0800 100 146**



**DRAINABLE**

#### STANDARD DRAINABLE POUCHES

SIZE	VOLUME	STARTER HOLE	PRE-CUT	ORDER CODES Trans/Overlap	PACK SIZE
13–25mm	550ml	•	–	CDSS1325	10
13–38mm	550ml	•	–	CDSS1338	10
13–52mm	550ml	•	–	CDSS1352	10
21mm	550ml	–	•	CDSS21	10
25mm	550ml	–	•	CDSS25	10
28mm	550ml	–	•	CDSS28	10
32mm	550ml	–	•	CDSS32	10
35mm	550ml	–	•	CDSS35	10
38mm	550ml	–	•	CDSS38	10
41mm	550ml	–	•	CDSS41	10

Note: Convexity should only be used after prior assessment by Stomal Therapy Nurses.

**SAS MONTHLY ALLOWANCE: 30 pouches per month (3 boxes)**

# Harmony<sup>®</sup> Duo



For more information and free samples: **AUS 1300 784 737 • NZ 0800 100 146**



**DRAINABLE**

LARGE DRAINABLE POUCHES				
SIZE	VOLUME	ORDER CODES Transparent	ORDER CODES Trans/Overlap	PACK SIZE
13–32mm	675ml	–	HDDL1332	30
13–50mm	610ml	HDDLT1350*	HDDL1350	30
13–70mm	535ml	HDDLT1370*	HDDL1370	30
STANDARD DRAINABLE POUCHES				
SIZE	VOLUME	ORDER CODES Opaque		PACK SIZE
13–32mm	550ml	HDD1332		30
13–50mm	490ml	HDD1350		30
13–70mm	425ml	HDD1370		30
SMALL DRAINABLE POUCHES				
SIZE	VOLUME	ORDER CODES Opaque		PACK SIZE
13–32mm	350ml	HDDS1332		30
13–50mm	325ml	HDDS1350		30
13–70mm	250ml	HDDS1370		30

\* Product has no filter.

2-PIECE  
DRAINABLE

**SAS MONTHLY ALLOWANCE: 30 pouches per month (1 box)**





# Harmony® Duo

with Flexifit® Flange & Aloe Vera

## STANDARD FLANGES – with Flexifit® and Aloe Vera extracts

SIZE	ORDER CODES	TO FIT POUCHES			PACK SIZE
		1332	1350	1370	
13–32mm	FHD1332*	✓	–	–	10
13–50mm	FHD1350*	–	✓	–	10
13–70mm	FHD1370*	–	–	✓	10
21mm	FHD21	✓	–	–	10
25mm	FHD25	✓	–	–	10
28mm	FHD28	✓	–	–	10
32mm	FHD32	✓	–	–	10
35mm	FHD35	–	✓	–	10
38mm	FHD38	–	✓	–	10

## FLEXIBLE FLANGES – with hydrocolloid surround, Flexifit® and Aloe Vera extracts

SIZE	ORDER CODES	TO FIT POUCHES			PACK SIZE
		1332	1350	1370	
13–32mm	FHDF1332*	✓	–	–	10
13–50mm	FHDF1350*	–	✓	–	10
13–70mm	FHDF1370*	–	–	✓	10
21mm	FHDF21	✓	–	–	10
25mm	FHDF25	✓	–	–	10
28mm	FHDF28	✓	–	–	10
32mm	FHDF32	✓	–	–	10
35mm	FHDF35	–	✓	–	10
38mm	FHDF38	–	✓	–	10

\*Starter hole. It doesn't matter if you need a small, standard or large pouch, this matrix still applies.

**SAS MONTHLY ALLOWANCE: 30 flanges per month (3 boxes)**

For more information and free samples: **AUS 1300 784 737 • NZ 0800 100 146**

# Harmony® Duo convex

with Flexifit® & Aloe

**2**  
PIECE

**DRAINABLE**



**STANDARD FLANGE**



**FLEXIBLE FLANGE**



**CONVEX FLANGE**

## CONVEX FLANGES – with Flexifit® and Aloe Vera extracts

SIZE	ORDER CODES	TO FIT POUCHES			PACK SIZE
		1332	1350	1370	
13–25mm	XFHD1325*	✓	–	–	5
13–38mm	XFHD1338*	–	✓	–	5
13–52mm	XFHD1352*	–	–	✓	5
21mm	XFHD21	✓	–	–	5
25mm	XFHD25	✓	–	–	5
28mm	XFHD28	✓	–	–	5
32mm	XFHD32	–	✓	–	5
35mm	XFHD35	–	✓	–	5
38mm	XFHD38	–	✓	–	5

\*Starter hole. It doesn't matter if you need a small, standard or large pouch, this matrix still applies.

Note: Convexity should only be used after prior assessment by Stomal Therapy Nurses.

**SAS MONTHLY ALLOWANCE: 20 flanges per month (4 boxes)**

For more information and free samples: **AUS 1300 784 737 • NZ 0800 100 146**

# Confidence®

Natural Advance



WITH ALOE EXTRACTS

For more information and free samples: **AUS 1300 784 737 • NZ 0800 100 146**



## UROSTOMY

### STANDARD POUCHES

SIZE	VOLUME	STARTER HOLE	PRE-CUT	ORDER CODES Trans/Overlap	PACK SIZE
13mm	315ml	•	–	NUA13*	10
25mm	315ml	–	•	NUA25	10
28mm	315ml	–	•	NUA28	10
32mm	315ml	–	•	NUA32	10
35mm	315ml	–	•	NUA35	10

### SMALL POUCH

SIZE	VOLUME	STARTER HOLE	PRE-CUT	ORDER CODE Trans/Overlap	PACK SIZE
13mm	155ml	•	–	NUAS13*	10

\* Starter hole wafers can be cut up to 70mm wide and 55mm deep.

1-PIECE  
UROSTOMY

**SAS MONTHLY ALLOWANCE: 40 pouches per month (4 boxes)**

# Confidence®

## Natural

WITH ALOE VERA



WITH ALOE EXTRACTS

For more information and free samples: **AUS 1300 784 737 • NZ 0800 100 146**



## UROSTOMY

### STANDARD POUCHES

SIZE	VOLUME	STARTER HOLE	PRE-CUT	ORDER CODES Trans/Overlap	PACK SIZE
13mm	315ml	•	–	NU13*	10
25mm	315ml	–	•	NU25	10
28mm	315ml	–	•	NU28	10
32mm	315ml	–	•	NU32	10
35mm	315ml	–	•	NU35	10

### SMALL POUCH

SIZE	VOLUME	STARTER HOLE	PRE-CUT	ORDER CODE Trans/Overlap	PACK SIZE
13mm	155ml	•	–	NUS13*	10

\* Starter hole wafers can be cut up to 70mm wide and 55mm deep.

**SAS MONTHLY ALLOWANCE: 40 pouches per month (4 boxes)**

# Confidence® | GOLD OVAL UROSTOMY



For more information and free samples: **AUS 1300 784 737 • NZ 0800 100 146**





## UROSTOMY

### STANDARD UROSTOMY POUCH

SIZE	VOLUME	STARTER HOLE	PRE-CUT	ORDER CODE Trans/Overlap	PACK SIZE
13mm	315ml	•	–	UTO13*	10

\* Oval flange pouch can be cut up to 110mm wide and 70mm deep.

**SAS MONTHLY ALLOWANCE: 40 pouches per month (4 boxes)**

# Confidence®

## CONVEX SUPERSOFT UROSTOMY



For more information and free samples: **AUS 1300 784 737 • NZ 0800 100 146**



## UROSTOMY

### STANDARD POUCHES

SIZE	VOLUME	STARTER HOLE	PRE-CUT	ORDER CODES	PACK SIZE
13–25mm	315ml	•	–	CUSS1325	10
13–38mm	315ml	•	–	CUSS1338	10
13–52mm	315ml	•	–	CUSS1352	10
21mm	315ml	–	•	CUSS21	10
25mm	315ml	–	•	CUSS25	10
28mm	315ml	–	•	CUSS28	10
32mm	315ml	–	•	CUSS32	10
35mm	315ml	–	•	CUSS35	10
38mm	315ml	–	•	CUSS38	10

Note: Convexity should only be used after prior assessment by Stomal Therapy Nurses.

**SAS MONTHLY ALLOWANCE: 30 pouches per month (3 boxes)**

# Confidence®

Wound and Fistula Pouch with FLEXIFIT®  
(non-sterile)



For more information and free samples: **AUS 1300 784 737 • NZ 0800 100 146**



## WOUNDCARE

### CONFIDENCE® WOUND AND FISTULA POUCH with FLEXIFIT® (non-sterile)

SIZE	VOLUME	ORDER CODES	PACK SIZE
SMALL – Horizontal wounds up to 60mm wide and 40mm high	50ml	CWM01	10
SMALL – Vertical wounds up to 40mm wide and 60mm high	50ml	CWM02	10
MEDIUM – Vertical wounds up to 53mm wide and 150mm high	55ml	CWM03	10



Can be attached to most drainage bags on the market

**SAS MONTHLY ALLOWANCE: 10 pouches per month (1 box)**

1-PIECE  
WOUNDCARE

# Simplicity<sup>®</sup> STOMA SUPPORT WEAR



For more information and free samples: **AUS 1300 784 737 • NZ 0800 100 146**

SIMPLICITY® BOXER			SIMPLICITY® BRIEF		
SIZE	COLOUR	ORDER CODES	SIZE	COLOUR	ORDER CODES
X Small 55–69cm	Black	BOXBXS	XS (4/6/8)	Black	BRFBXS
X Small 55–69cm	White	BOXWXS	XS (4/6/8)	White	BRFWXS
X Small 55–69cm	Neutral	BOXNXS*	XS (4/6/8)	Neutral	BRFNXS*
Small/Med 70–83cm	Black	BOXBSM	S/M (8/10/12)	Black	BRFBSM
Small/Med 70–83cm	White	BOXWSM	S/M (8/10/12)	White	BRFWSM
Small/Med 70–83cm	Neutral	BOXNSM*	S/M (8/10/12)	Neutral	BRFNSM*
Med/Large 84–98cm	Black	BOXBML	M/L (14/16/18)	Black	BRFBML
Med/Large 84–98cm	White	BOXWML	M/L (14/16/18)	White	BRFWML
Med/Large 84–98cm	Neutral	BOXNML*	M/L (14/16/18)	Neutral	BRFNML*
Large/X Large 99–112cm	Black	BOXBLXL	L/XL (20/22/24)	Black	BRFBLXL
Large/X Large 99–112cm	White	BOXWLXL	L/XL (20/22/24)	White	BRFWLXL
Large/X Large 99–112cm	Neutral	BOXNLXL*	L/XL (20/22/24)	Neutral	BRFNLXL*
XX Large 113–127cm	Black	BOXBXXL	XXL (26/28/30)	Black	BRFBXXL
XX Large 113–127cm	White	BOXWXXL	XXL (26/28/30)	White	BRFWXXL
XX Large 113–127cm	Neutral	BOXNXXL*	XXL (26/28/30)	Neutral	BRFNXXL*

\*Currently not available in New Zealand.

SAS ANNUAL ALLOWANCE: 6 pairs per year



# Dermacol®

stoma collar **FOR COMPLETE SECURITY**

**THE FIRST CHOICE FOR SUPERIOR SKIN PROTECTION**



DERMACOL®					
STOMA SIZE	ORDER CODES	PACK SIZE	STOMA SIZE	ORDER CODES	PACK SIZE
17mm – 20mm	DC20	30	30mm – 32mm	DC32	30
21mm – 23mm	DC23	30	33mm – 35mm	DC35	30
24mm – 26mm	DC26	30	36mm – 38mm	DC38	30
27mm – 29mm	DC29	30	39mm – 41mm	DC41	30

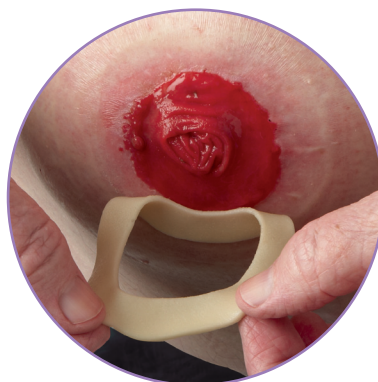
**SAS MONTHLY ALLOWANCE: 30 per month (1 box)**

For more information and free samples: **AUS 1300 784 737 • NZ 0800 100 146**

# SecuPlast®

Mouldable Seals

## HIGH ABSORPTION AND ADHESION



### SECUPLAST® MOULDABLE SEALS

SIZE	DIAMETER	THICKNESS	ORDER CODES	PACK SIZE
THIN*	50mm	3mm	SMST	30
STANDARD*	50mm	4.2mm	SMSS	30
LARGE**	100mm	3mm	SMSL	10

**SAS MONTHLY ALLOWANCE: 30 per month (\*1 box, \*\*3 boxes)**

For more information and free samples: **AUS 1300 784 737 • NZ 0800 100 146**

# SecuPlast®

## Aloe Rings

MODERATE ABSORPTION AND ADHESION



WITH ALOE EXTRACTS

### SECUPLAST® ALOE RINGS

INTERNAL DIAMETER	THICKNESS	ORDER CODE	PACK SIZE
25mm	1.8mm	SAR25	30
32mm	1.8mm	SAR32	30
38mm	1.8mm	SAR38	30
45mm	1.8mm	SAR45	30

**SAS MONTHLY ALLOWANCE: 30 per month (1 box)**

For more information and free samples: **AUS 1300 784 737 • NZ 0800 100 146**

# SecuPlast<sup>®</sup>

## Hydro Aloe Vera<sup>™</sup>

EXTRA SECURITY AROUND THE EDGE OF THE FLANGE



WITH ALOE EXTRACTS

### SECUPLAST<sup>®</sup> HYDRO ALOE VERA

SIZE	ORDER CODE	PACK SIZE
One size fits all	SPHA2	30

SAS MONTHLY ALLOWANCE: **60 strips per month** (2 packs)

For more information and free samples: **AUS 1300 784 737 • NZ 0800 100 146**

## SECUPASTE® STOMA PASTE AND SECUPLAST® HYDRO TAPE



### SECUPASTE®

DESCRIPTION	SIZE	ORDER CODE	PACK SIZE
No-sting Stoma Paste	60g	NSP1	1

**SAS MONTHLY ALLOWANCE: 3 tubes per month**



### SECUPLAST® HYDRO TAPE

DESCRIPTION	SIZE	ORDER CODE	PACK SIZE
Hydrocolloid Tape	1.5m long x 25mm wide	HT2	1

**SAS MONTHLY ALLOWANCE: 4 boxes per month**

For more information and free samples: **AUS 1300 784 737 • NZ 0800 100 146**

## SKIN PROTECTION AND ACCESSORIES



### WIPEAWAY ADHESIVE REMOVER

DESCRIPTION	SIZE	ORDER CODES	PACK SIZE	SASA†
Wipes	–	WA1	30 sachets	60 per month (2 boxes)
PLUS Spray	50ml	WAP*	1	2 per month



### PERI-PREP® SENSITIVE

DESCRIPTION	ORDER CODE	PACK SIZE	SASA†
Wipes	PPS1	30 sachets	60 per month (2 boxes)



### NO-ROMA

SIZE	ORDER CODE	PACK SIZE	SASA†
28ml	833021	1	1 per month



### STOMA PASTE

SIZE	ORDER CODE	PACK SIZE	SASA†
60g	SP60	1	3 per month



### NIGHT DRAINAGE BAG

SIZE	ORDER CODE	PACK SIZE	SASA†
2,000ml	ZL0400	1	5 per month



### ADJUSTABLE OSTOMY BELTS

SIZE	ORDER CODES	PACK SIZE	SASA†
100cm	AB01	1	4 per year
122cm	AB02	1	4 per year

\*Currently not available in New Zealand.

†SAS Allowance per month/year.

For more information and free samples: **AUS 1300 784 737 • NZ 0800 100 146**



FOR FREE SAMPLES call TOLL FREE  
1300 784 737 (NZ 0800 100 146) or visit  
[www.ainscorp.com.au](http://www.ainscorp.com.au)

**SALTS**  
HEALTHCARE  
[www.salts.co.uk](http://www.salts.co.uk)

CE ®Registered trade marks of Salts Healthcare Ltd. ©Salts Healthcare Ltd 2017. Products and trade marks of Salts Healthcare Ltd are protected by UK and foreign patents, registered designs and trade marks. For further details, please visit [www.salts.co.uk](http://www.salts.co.uk)

RM763555 03/17