

# Application method **1** for one- and two-piece.



**1** Carefully slide the guide up and around the stoma.



**2** When the two edges of the size guide slightly touch the stoma, stop, then read the collar product number from the chart.



**3** Remove film backing.



**4** Slide collar gently up and around the stoma.



**5** Remove release film.



**6** Securely connect the pouch or flange to the collar. If collar pushes down your stoma, try method 2 or try cutting your flange slightly larger.



**7** Smooth round with fingers to make sure the pouch or flange adhesive is secure. If using a two-piece system, apply pouch to flange.



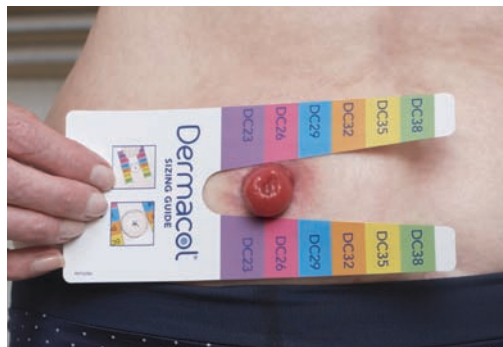
## Removal

Gently remove pouch or flange...



...together with the collar.

# Application method **2** for one- and two-piece.



**1** Carefully slide the guide up and around the stoma. When the two edges of the size guide slightly touch the stoma, stop, then read the collar product number from the chart.



**2** Remove release film.



**3** Insert the collar ensuring the edges of the collar do not get caught.



**4** Smooth round with the fingers to ensure good adhesion.



**5** Remove the film backing from the collar.



**6** Push the collar back through, if required.



**7** Carefully place the stoma through the collar and pouch or flange.



**8** The pouch or flange is now safely attached. If using a two-piece system, apply pouch to flange.



## Removal

Gently remove pouch or flange together with the collar.



Validating Salts research into healthy stoma skin

For free samples

FREEPHONE 0800 626388 – UK

FREEPHONE 1-800 408508 – Ireland

or [www.salts.co.uk](http://www.salts.co.uk)

# SALTS

HEALTHCARE